



lexiCan Pro-Edition

How to install your license file

Thank you for buying lexican! Installing your license is very easy, this document tells you how.

Requirements

I. **Install lexican Standard-Edition**

In order to use the unlimited lexican Pro-Edition, you need to have the lexican Standard-Edition installed and running on your computer. If you have not already installed the lexican Standard-Edition, please download it now for free at www.lexican.net

II. **License file**

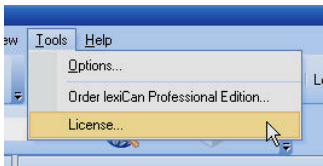
After purchase, you receive a license file via mail. It carries the ending '.xml'.

Upgrade instructions

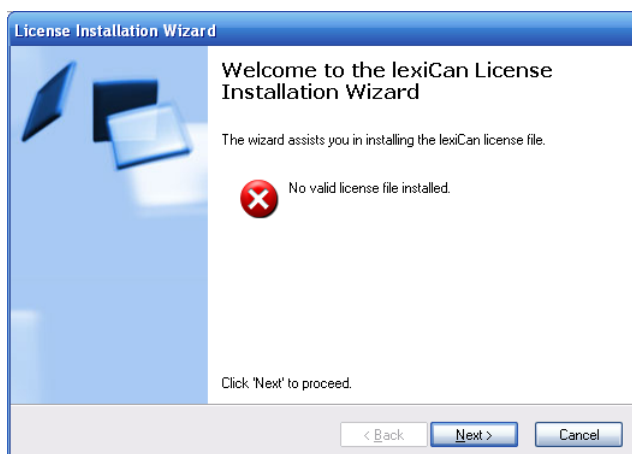
1. Please save the licence file you have received in a local folder on your computer (for example: 'C:\lexican')

Please note: keep your license file carefully, even after the installation. It remains your proof that you own the user rights and you may also need it again once you move to another computer.

2. Start the lexican Standard-Edition on your computer.
3. Select 'Licence' from the 'Tools' menu



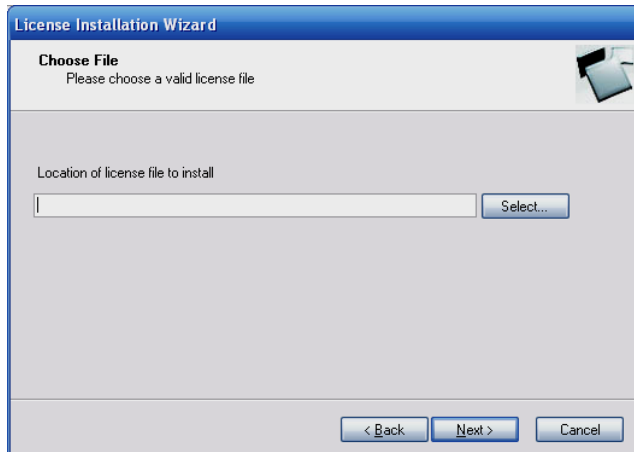
4. The lexican License Installation Wizard starts:



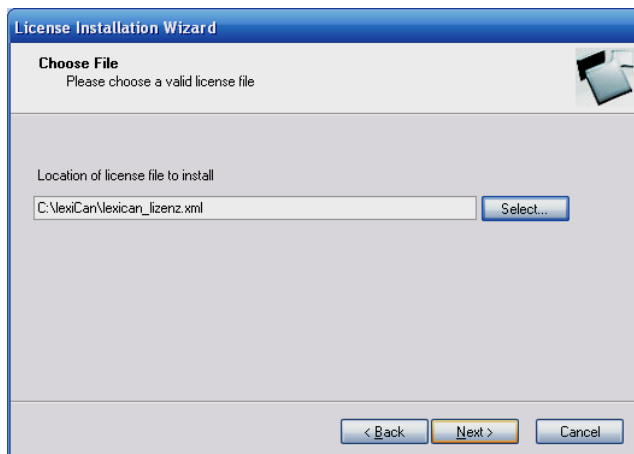
Click 'Next' to proceed.



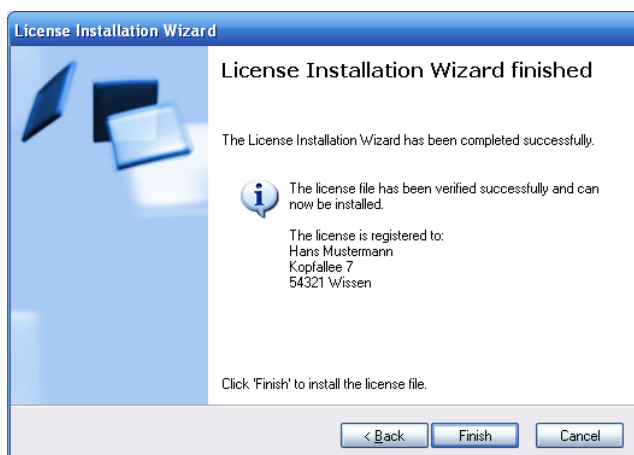
5. Click 'Select...' to choose the location of your license file stored in Step 1.



6. Click 'Next' to confirm your choice.



7. The lexican License Installation Wizard has successfully installed your license:



Click 'Finish' to complete the procedure.
Enjoy the unlimited use of lexican Pro-Edition!